

# Local, Regional, & Statewide CE Efforts

Career Education and Workforce Development Division  
Alina Varona, Dean of Career Education and Workforce

COMPUTER INFORMATION SYSTEMS  
BUSINESS AND COMMERCE  
SOFTWARE DEVELOPMENT EMERGENCY MEDICAL SERVICES  
SUMMER CAREER ACADEMIES  
NURSING **AUTOMOTIVE TECH** DENTAL OCCUPATIONS  
**MANUFACTURING AND INDUSTRIAL TECH**  
FILM STUDIES **AUTO COLLISION AND REPAIR** HOSPITALITY  
DIGITAL MEDIA  
MEDICAL ASSISTING **CONSTRUCTION** ENGLISH AS A SECOND LANGUAGE  
EARLY CHILDHOOD EDUCATION  
INFORMATION TECHNOLOGY BUSINESS MANAGEMENT

Career  
Education  
and  
Workforce  
Programs

# Career Education Programs



- Administration of Justice
- Auto & Industrial  
Auto Collision Repair; Auto Technology;  
Electronics; Machine & Metals; Theater  
Technology - Stage Carpentry
- Business  
Applied Accounting; Business Administration;  
Entrepreneurship; Hospitality Management;  
Real Estate
- Computers & Multimedia  
Computer Information Systems; Graphic  
Design; 3D, Video, Game Dev; Web Design and  
Development; MS Office Specialist Certification
- Court Reporting
- Early Childhood Education
- Health Sciences  
Registered Dental Assisting; Emergency  
Medical Tech Training; Medical Assisting;  
Registered Nursing; FIRE Foundry Program
- Organic Farm/Gardening
- Education 2 Career (E2C)  
Construction
- Summer Career Academies
- Short-Term Career Training  
Programs (12 Weeks)  
Business Start-Up, E-Commerce and Social  
Media, Small Business Management

# CAREER EDUCATION AND WORKFORCE DEVELOPMENT GOALS

Statewide Objectives and Approach for California's Community Colleges

2.1 million students at 116 colleges

Prepare students for 21st century jobs, careers, and the future of work.

## Degrees & Certificates

- Create Pathways & Support Momentum
- Credit and non credit

## Short Term Training & Workforce Development

- Respond In-Time to Labor Market Needs and Connect to Employment
- Credit, non credit, not-for-credit

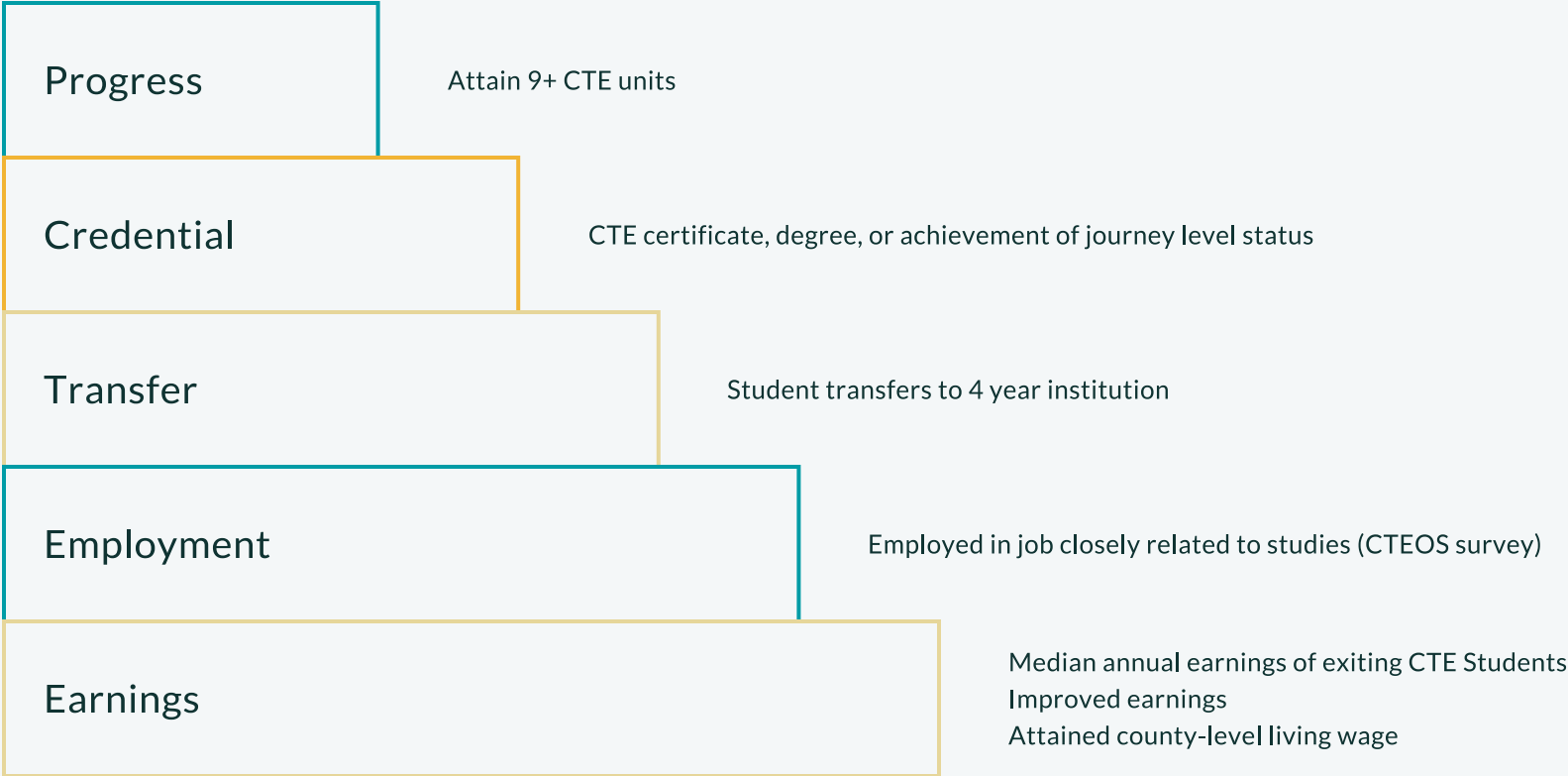
## Non Credit Education

- Ladder and Bridge to Basic Skills, Work, and Credit

Help students build an entrepreneurial mindset to be successful as an employee or entrepreneur

# The Strong Workforce Program (SWP): State Categorical Funding to Support More and Better Career Education for California

## What Guides Funding Decisions?



## BACCC's Five Economic Subregions

### North Bay

- Marin
- Napa Valley
- Santa Rosa
- Solano

### East Bay

- Alameda
- Berkeley
- Chabot
- Contra Costa
- Diablo Valley
- Laney
- Las Positas
- Los Medanos
- Merritt
- Ohlone

### Mid Peninsula

- Cañada
- San Francisco
- San Mateo
- Skyline

### Silicon Valley

- DeAnza
- Evergreen Valley
- Foothill
- Gavilan
- Mission
- San Jose City
- West Valley

### Santa Cruz & Monterey

- Cabrillo
- Hartnell
- Monterey Peninsula



The Bay Area Community College Consortium (BACCC) is comprised of 28 colleges surrounding the San Francisco and Monterey Bays

## Facilitate

- Convene, collaborate, plan, manage, communicate and inform career education program investments.

## Connect

- Support systems thinking and connection through pathway development collaborations with K12 and Adult Education consortia partners

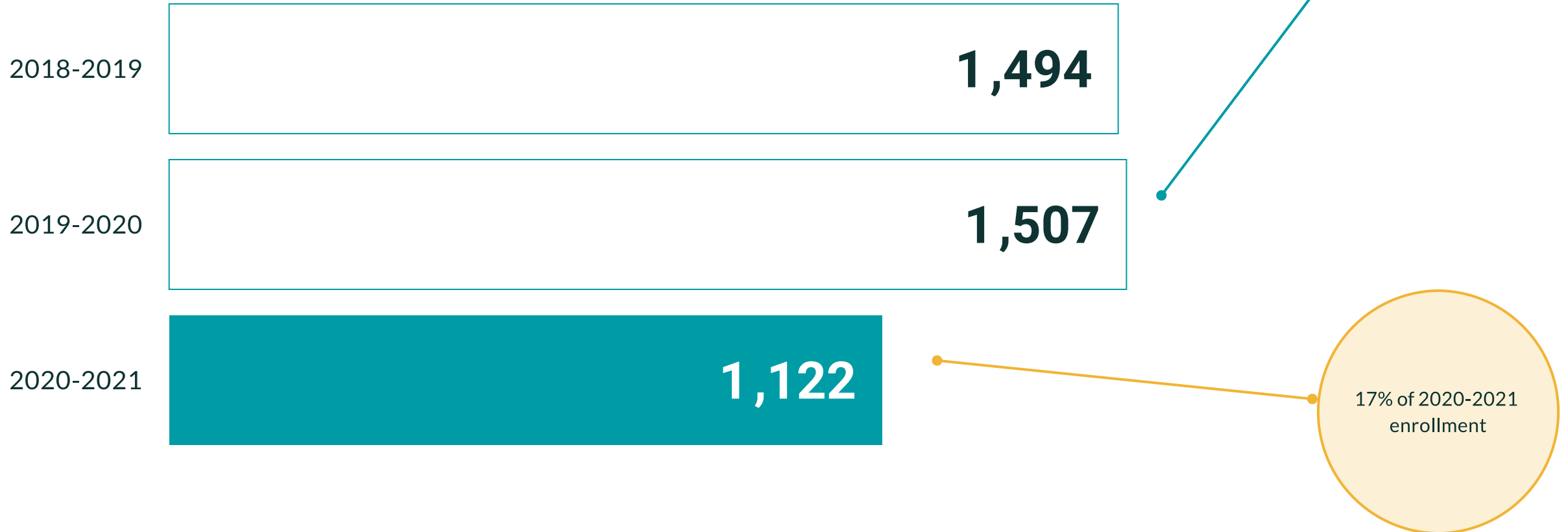
## Advocacy

- Career education policy and initiatives
- Serve as the liaison between colleges and the Chancellor's Office Workforce and Economic Development Division

Chancellor's Office SWP All CE Count: N=2,374

# CE Division Enrollment Overview

Excludes: nursing, ECE, business, theater tech top codes

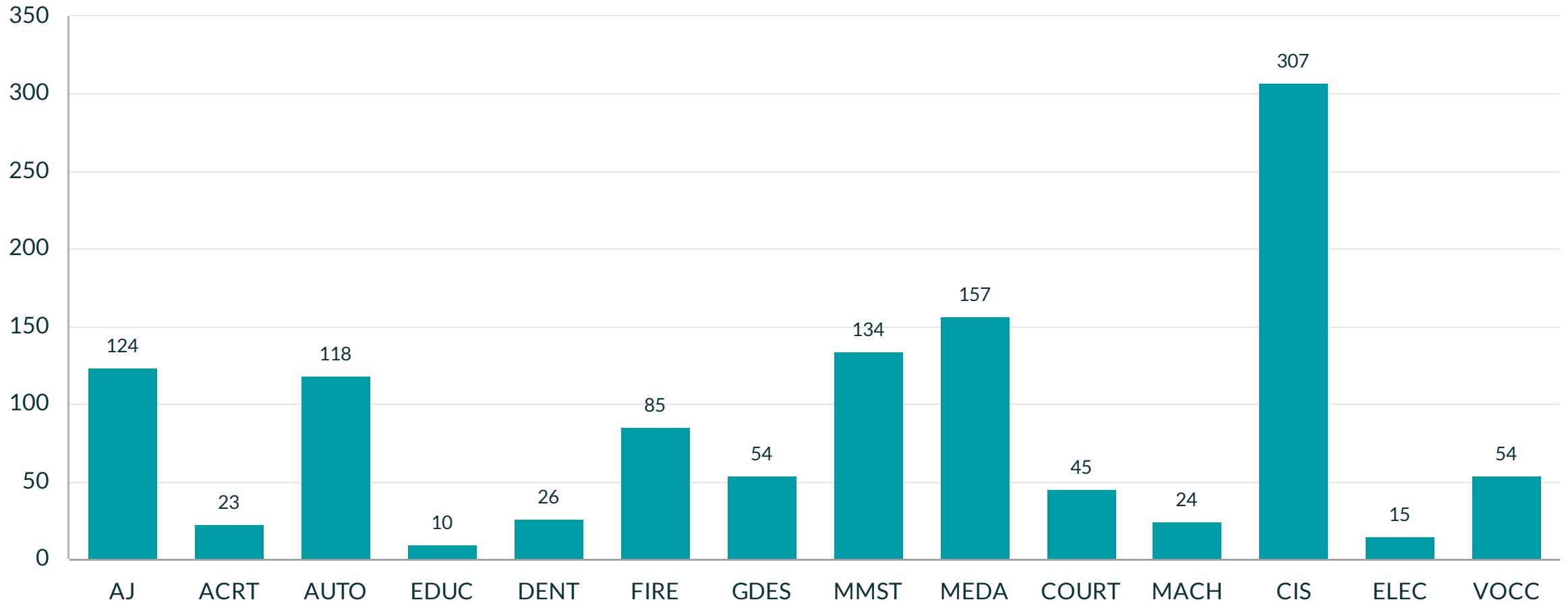


Academic year 2020-2021 unduplicated headcount by program

# Enrollments by Program

6,634 COM credit STUDENTS

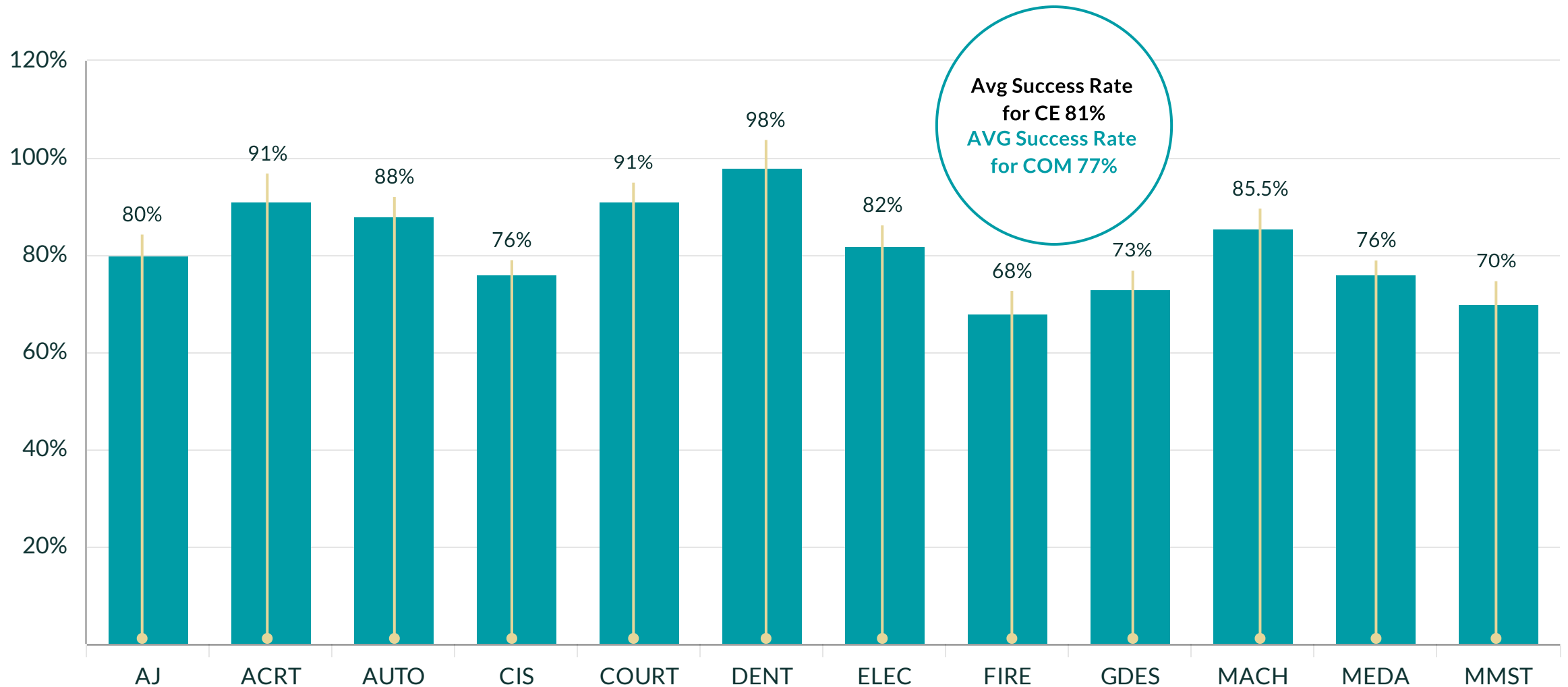
N=1,176 UNDUPLICATED STUDENTS OR 17% OF TOTAL COM STUDENT BODY





# Course Completion

Success percentage average across academic years fall 2018-spring 2021 and across campuses and modalities.



# Career Education Outcomes

Source: Awards Transfers-Career Ed-2019-2021



35% of Total College Awards

27

Degrees 2020 - 21

58

Certificates 2020 - 21

149

Noncredit certificate, Chancellor's approved certificate, and/or degree on a TOP code assigned to a vocational sector

Total COM Awards 2020-2021 N= 430

# EMPLOYMENT DATA

18 months after college completion-

85% Goal

77%



Found a job very closely or closely related to their field.

23%



Reported job is not closely related to their field.

A Vision for Equity and Excellence in CTE

# California State Plan for Career Technical Education

<https://www.cde.ca.gov/ci/ct/gi/workpathjac.asp>

Draft Plan Closed for Comments Late November 2022

## Strategic Plan and Call to Action

Sets forth a student-centered vision for the future of high-quality CTE in the State of California.

## Cross-System Collaboration

- The California Workforce Pathways Joint Advisory Committee (CWPJAC)
- State Board of Education
- California Department of Education (CDE)
- California Community Colleges Chancellor's Office (Chancellor's Office)

# Four Key Priorities Over 10 Years

## Supply that meets demand

- California is the most populous state – with the highest Gross Domestic Product and one of the most diverse economies in the United States
- CTE system must align the supply of talent with the skills that are in demand.

## Effective delivery and support

- Ensure key components of CTE pathways ( work-based learning and dual enrollment) are delivered effectively and equitably
- Provide learners and workers a wide range of opportunities to demonstrate and validate what they have learned outside the education system
- Intentional, individualized supports for students and workers

## Data informed investments

- Improve data collection and develop more streamlined and efficient data collection processes
- Conduct research on how to improve systems that support college and career pathway
- Build capacity to use data effectively, regularly among stakeholders

## Systems alignment

- Align systems to close skill, employment, and equity gaps
- Secondary, post secondary, workforce agencies, employers, alternative ed, community based organization
- Funding focused on systems alignment and integration

# Five Key Themes

## Four Major Goals

More and better data, expanded dual enrollment, more CTE teachers and faculty, and increased equity centered work based learning.



CTE Pipeline: Understand & Mitigate  
Teacher & Faculty Shortage



Pathways



Dual Enrollment



Regional Partnership Development



Work Based Learning

# The Good News

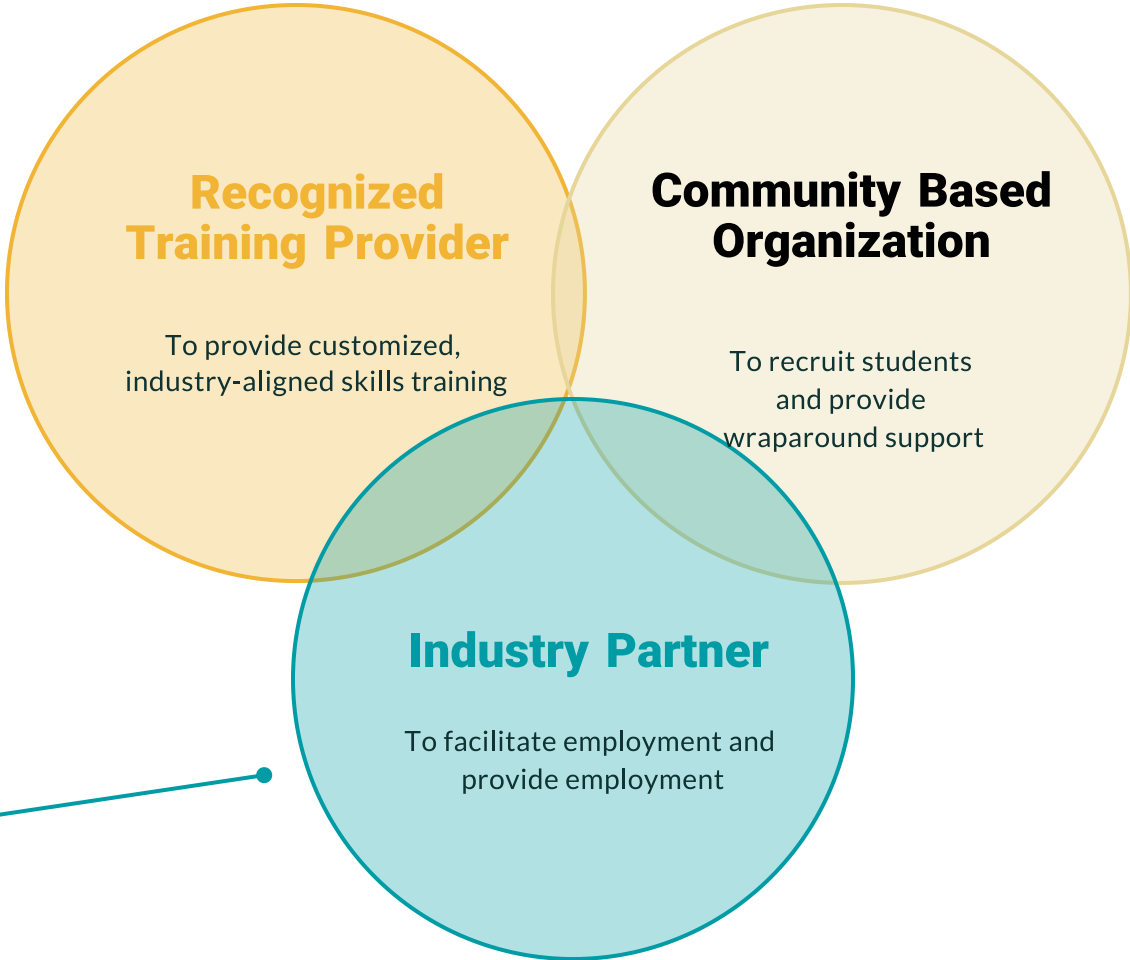
# The Education to Career (e2c) Model

Partnering for Student Success



education to career

**Industry Sector**  
in Local/Regional Demand,  
w/ livable, starting wage,  
w/ career path opportunities





# Short Term Workforce Training

## e2c Construction Impact: 2021-2022



182 total enrollments & 12 cohorts since Fall 2018



145 Graduates (2018 - 2022)  
80% Completion Rate



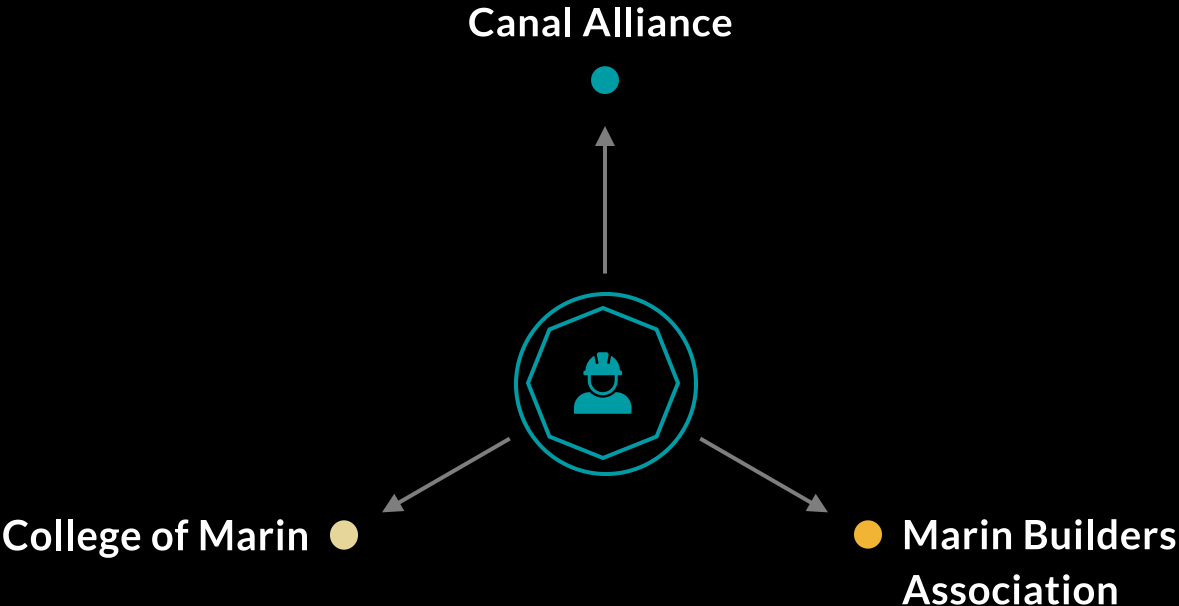
New Jobs: Workforce Success for 85% of Graduates: new job or higher wage



Program Growth: on-board additional instructors; new training site

# High Impact Programs to Meet Today's Needs and Tomorrow's Demand

The E2C Model: cohesive, multi-system coordinated support for students.



<b>GGT Apprenticeship</b>
<b>CNA/CHHA</b>
<b>FIRE Foundry</b>
<b>Construction</b>



# K-14 COMPREHENSIVE CAREER PATHWAYS





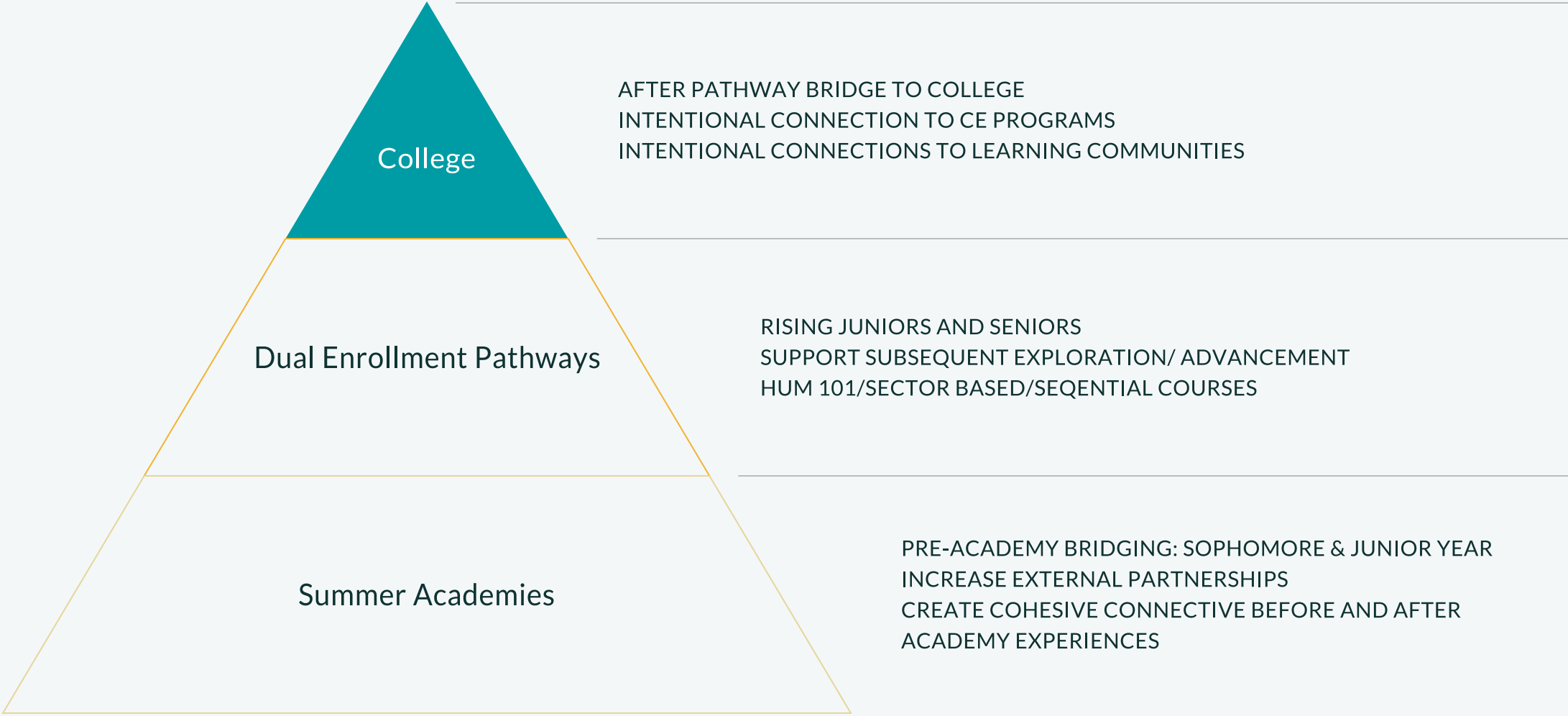
“The best part was how easy and flexible the learning was so that everyone had their own pace, but we all stayed on the same track. We weren’t super constrained like high school classes.”

Ruby A- Game Development

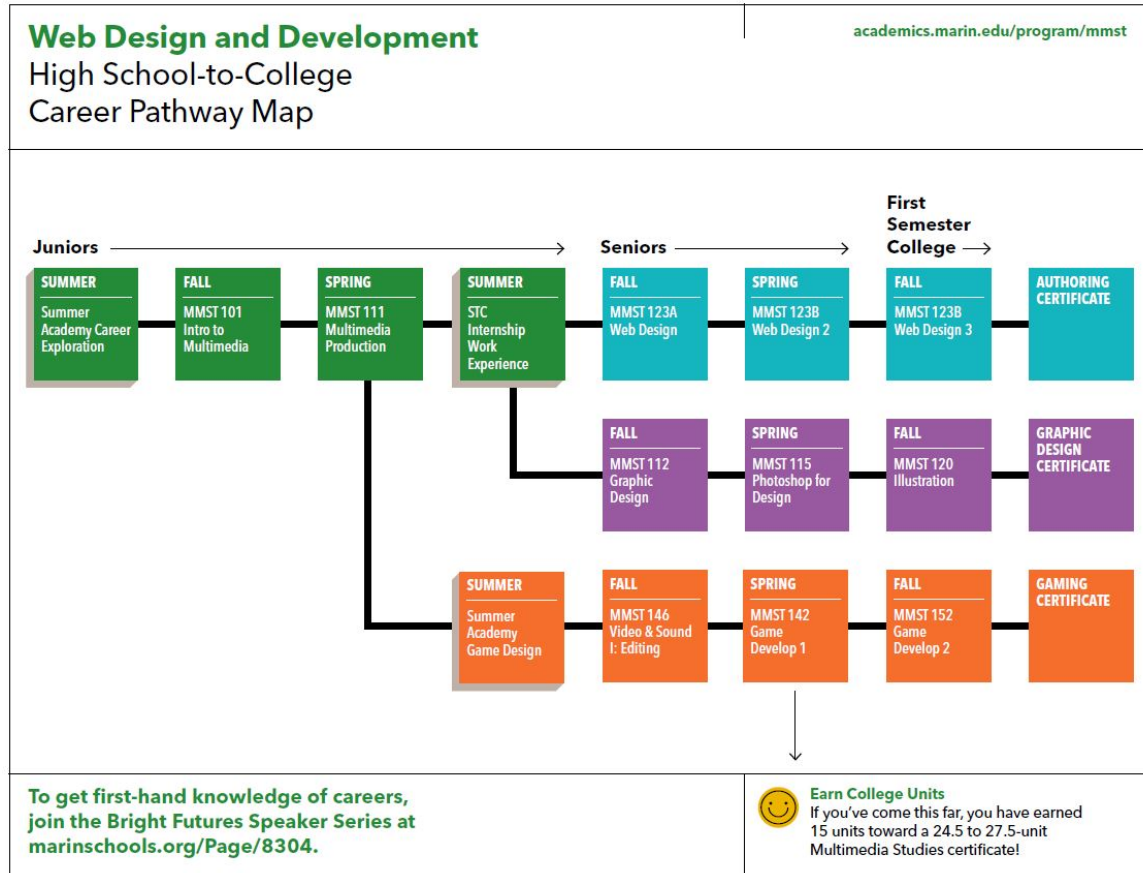


# Academies 2.0: Building & Mapping Cohesive Pathways

Significant Progress on Cohesive and Comprehensive K-14 Pathways



# Career Pathway Maps



- 5 Career Pathway Maps designed to date
- Lead to **16** Programs and **13** Degree/Certificate Options
- **30** Courses Recommended for Dual Enrollment
- **13 - 15** COM units students can earn prior to exiting high school
- Earn certificates before exiting high school
- More maps expected by Spring 2023

# COMING SOON!

---

Workforce Alliance of the North Bay and Marin Fire IVC Co-location Strategies

# Questions and Discussion

