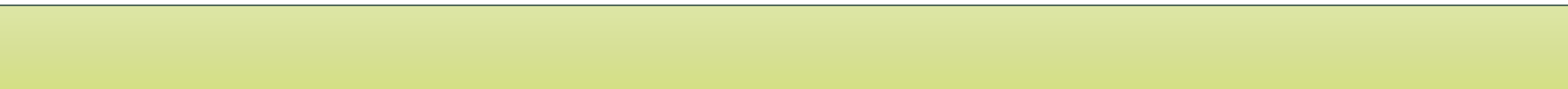




LRC Abatement & Demolition Plan

Isidro Farias,
Director of Capital Projects

March 3, 2020



Agenda

- Remaining LRC Related Moves
- Abatement Plan
- Demolition Plan
- Next Steps
- Questions

Remaining LRC Related Moves

Spring Break Moves:

- Move Fusselman Hall Staff from PV1 to Fusselman Hall
- Move OIM Staff from LRC to HR 10
- Move Film/Video from LRC to HR 10, PE 91 & PE 61
- Reprographics from LRC to 941 Sir Francis Drake
- Mail Room to room near AC 255
- Move Umoja from LRC to PV 1
- Move LC 150 to VS 5

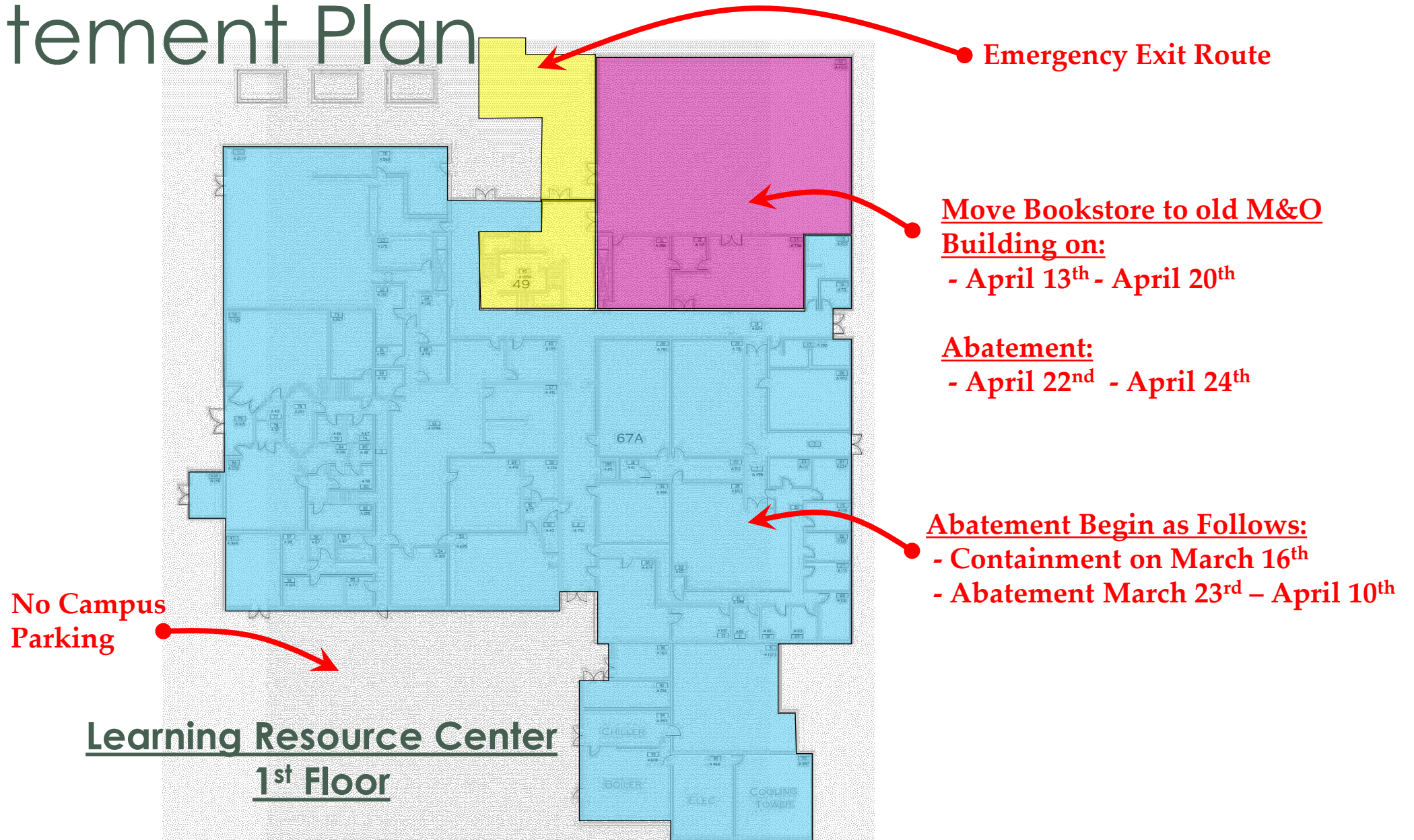
April 13th - April 20th Move:

- Bookstore from LRC to old Maintenance & Operations Building

Summer 2020 Move:

- Move Library after graduation to Fusselman Hall (some Library functions are moving sooner)

Abatement Plan



Abatement Plan

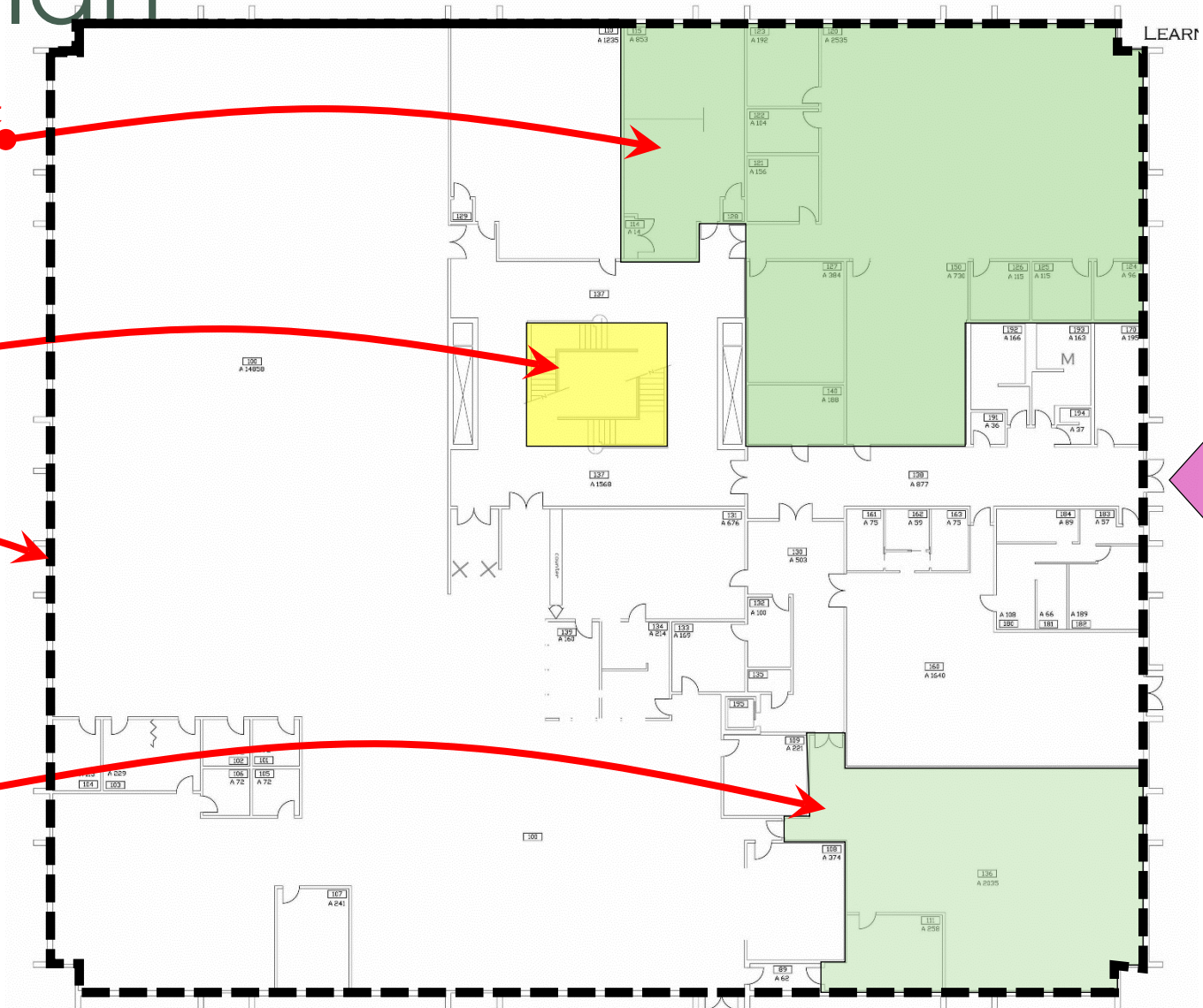
2nd Floor Containment Area (Timing TBD)

Emergency Exit Route

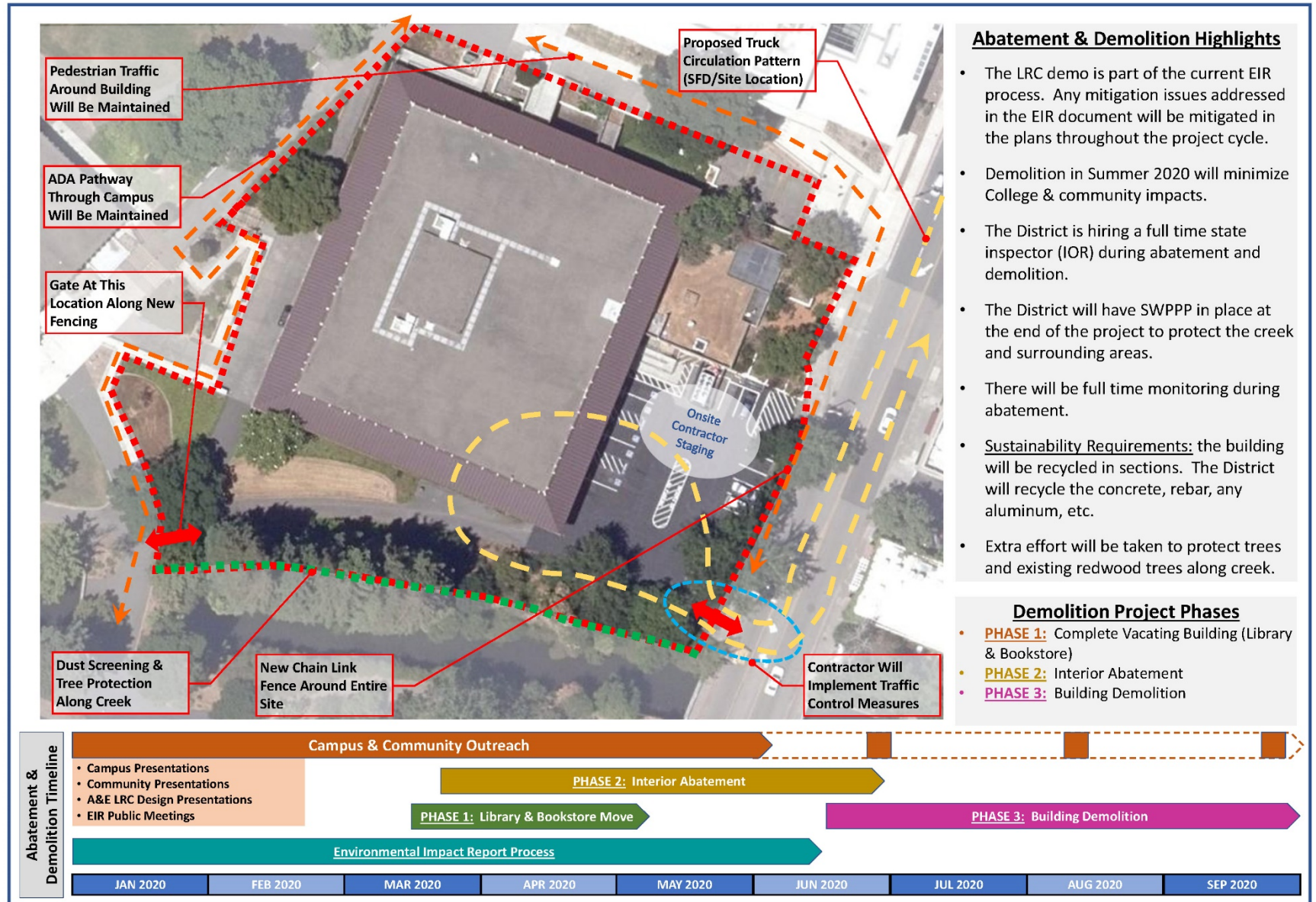
Abatement:
June 2nd – June 26th

2nd Floor Containment Area (Timing TBD)

Learning Resource Center
2nd Floor



Demo Plan



Abatement & Demolition Highlights

- The LRC demo is part of the current EIR process. Any mitigation issues addressed in the EIR document will be mitigated in the plans throughout the project cycle.
- Demolition in Summer 2020 will minimize College & community impacts.
- The District is hiring a full time state inspector (IOR) during abatement and demolition.
- The District will have SWPPP in place at the end of the project to protect the creek and surrounding areas.
- There will be full time monitoring during abatement.
- Sustainability Requirements: the building will be recycled in sections. The District will recycle the concrete, rebar, any aluminum, etc.
- Extra effort will be taken to protect trees and existing redwood trees along creek.

Demolition Project Phases

- PHASE 1:** Complete Vacating Building (Library & Bookstore)
- PHASE 2:** Interior Abatement
- PHASE 3:** Building Demolition

Next Steps

- Finalize Scheduled Moves
- Finalize Abatement Containment Dates for LRC 2nd Floor
- Schedule Future Update Presentations on LRC Demolition & LRC Project



Questions?