

# MEASURE B

## LEARNING RESOURCES CENTER DEMOLITION UPDATE & MEASURE B UPDATE

MAY 7, 2020



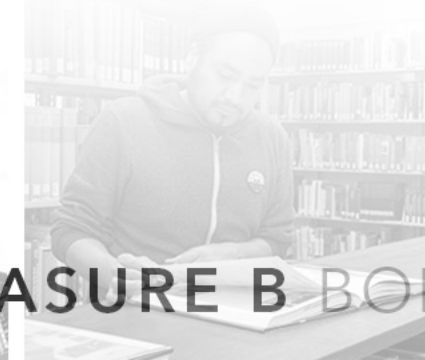
# LRC Demolition Update & Measure Update

- LRC Building Design Update
- LRC Building Context
- Abatement & Demolition Highlights
- Demolition Schedule
- Measure B Projects
- Summer Projects
- Question & Comments



# LRC Building Design Update

- Architect had been proceeding with planning meetings on the new Integrated Learning Resources Center + Student Services project
- District Staff had been evaluating building estimates and have given direction to architect which has resulted in a max building size of 85,000 Gross SF
- Since in person Town Hall meeting was postponed Architect developed a virtual Town Hall presentation and prepared an online survey
- Lease-Leaseback RFQ/RFP for Contractor put on hold until June 2020
- Design process put on hold until July 2020





# LRC Building Context





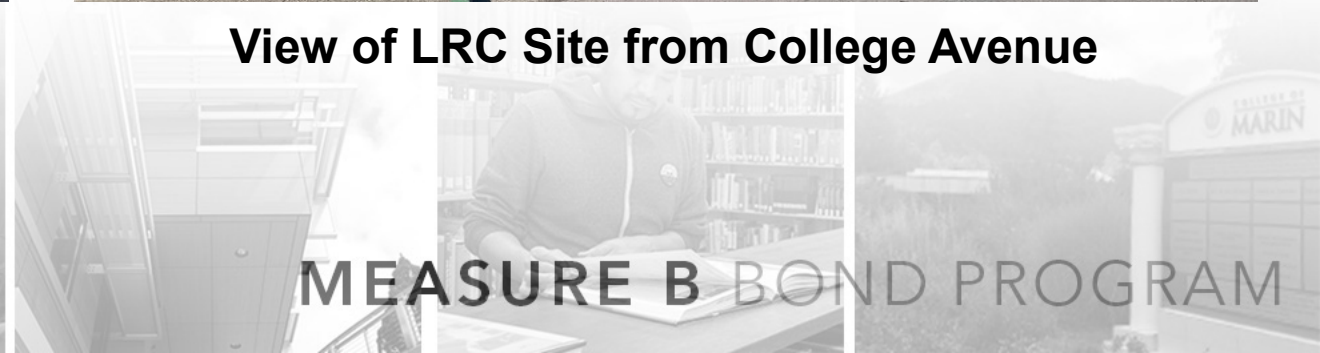
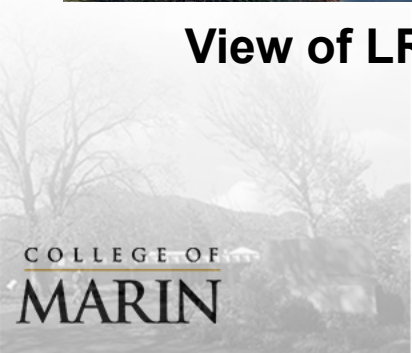
# LRC Building Context



**View of LRC Across the Academic Center**



**View of LRC Site from College Avenue**



**MEASURE B BOND PROGRAM**



# LRC Building Context



**View of LRC from Bridge**



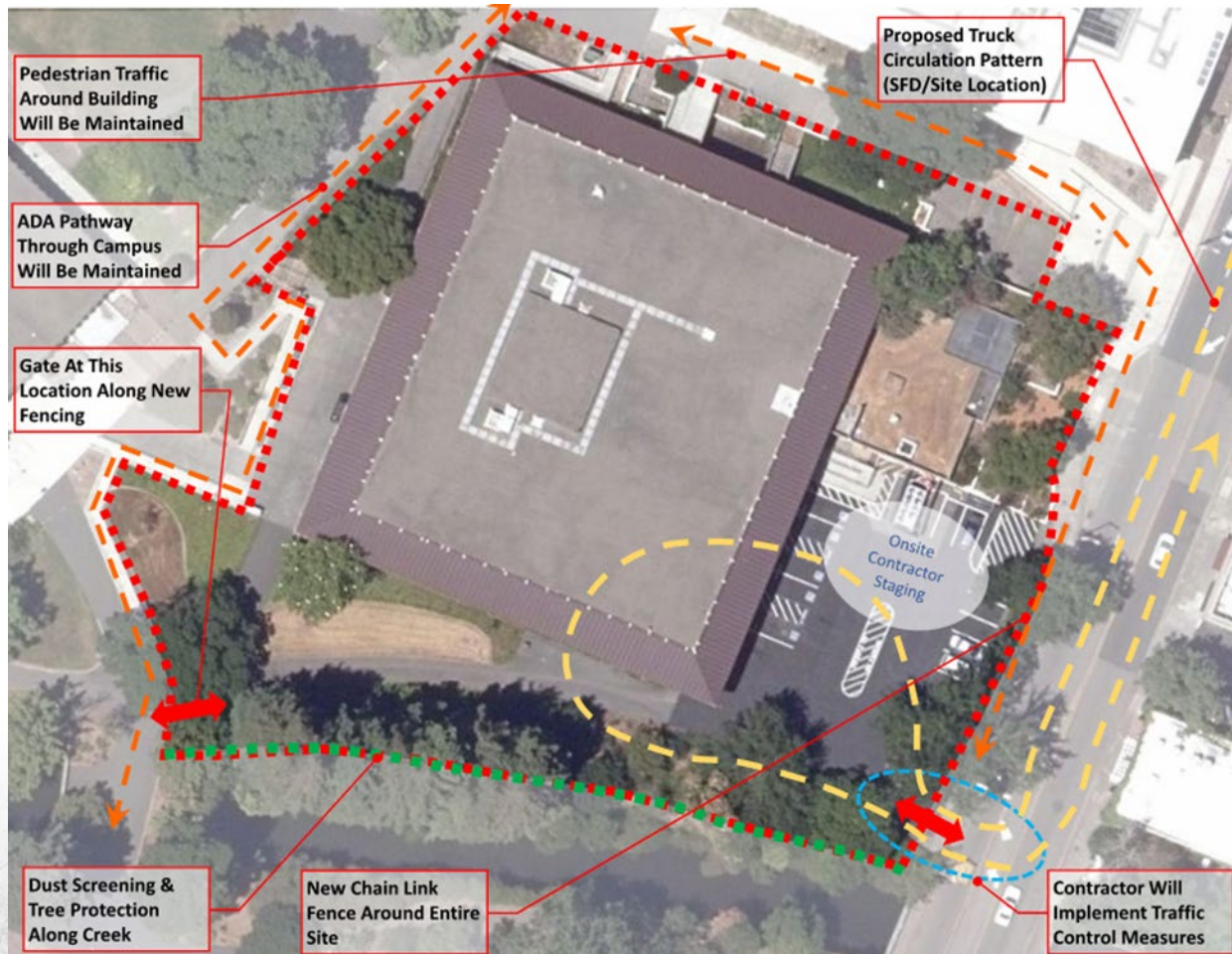
**View of LRC from College Avenue**

# Abatement & Demolition Highlights

- The LRC demo is part of the current EIR process. Any mitigation issues addressed in the EIR document will be mitigated in the plans throughout the project cycle.
- Demolition in Summer 2020 will minimize College & community impacts.
- The District hired a full time state inspector (IOR) for the abatement and demolition phases of the project.
- The District will have SWPPP in place at the end of the project to protect the creek and surrounding areas.
- There will be full time monitoring during abatement.
- Sustainability Requirements: the building will be recycled in sections. The District will recycle the concrete, rebar, any aluminum, etc.
- Extra effort will be taken to protect trees and existing redwood trees along creek.



# Abatement & Demolition Highlights

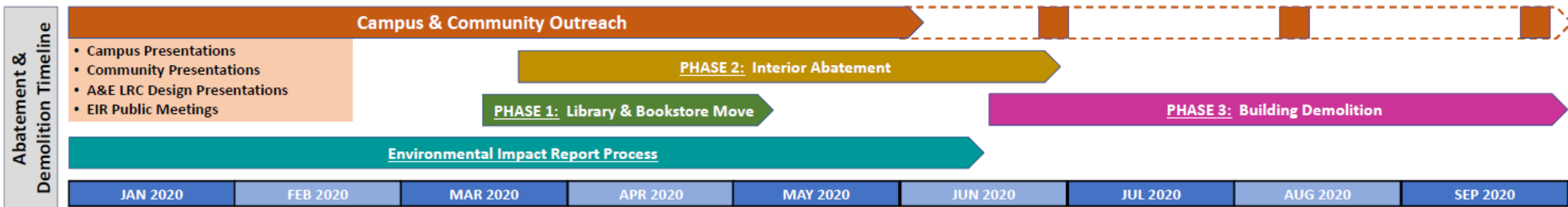


## Status:

- Interior abatement of first floor has been completed
- Interior abatement of second floor will begin in Mid-May
- New exterior fencing to be installed starting on May 4, 2020
- Diseased trees near College Avenue will be removed starting Mid-June 2020
- Exterior Abatement & Building Demolition expected Mid-June 2020
- Expected completion of Demolition expected late September 2020

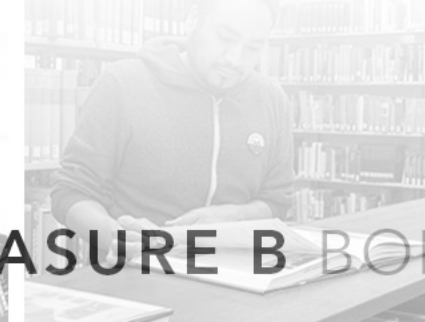


# Demolition Schedule



## Demolition Project Phases

- **PHASE 1:** Complete Vacating Building (Library & Bookstore)
- **PHASE 2:** Interior Abatement
- **PHASE 3:** Building Demolition



MEASURE B BOND PROGRAM

# Measure B Projects



**Maintenance & Operations Building**



**Library @ Fusselman Hall**



# Measure B Projects



**Jonas Center**



MEASURE B BOND PROGRAM



# Measure B Projects



**New Bookstore Location (@ Old M&O Building)**



MEASURE B BOND PROGRAM



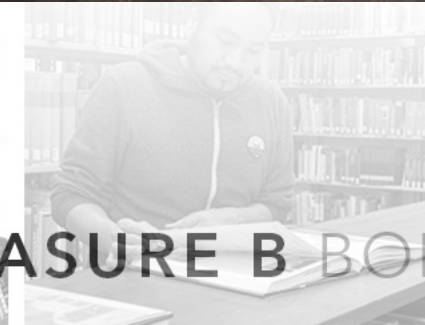
# Measure B Projects



**Interior Abatement @ the LRC**



**MEASURE B BOND PROGRAM**



# Summer Projects

Project	Location	Scope	Timeframe
<u>Ongoing Capital Projects:</u> <ul style="list-style-type: none"> <li>• IVC – Miwok &amp; Jonas</li> <li>• KTD – LRC Demolition, Fusselman Hall, PA Audio Visual Project</li> </ul>	IVC & KTD	<ul style="list-style-type: none"> <li>• Ongoing Construction</li> </ul>	<ul style="list-style-type: none"> <li>• Jonas - August 2020</li> <li>• Miwok - August 2021</li> <li>• LRC Demo June – September 2020</li> <li>• FH Exterior Landscape - May 2020</li> <li>• PA AV – June 2020</li> </ul>
M&O Building	KTD	<ul style="list-style-type: none"> <li>• Perimeter fencing</li> <li>• Fire lane improvements</li> </ul>	<ul style="list-style-type: none"> <li>• June</li> </ul>
KTD Portables @ Circle Drive	KTD	<ul style="list-style-type: none"> <li>• Raised planters</li> </ul>	<ul style="list-style-type: none"> <li>• June - July</li> </ul>
941 Sir Francis Drake	KTD	<ul style="list-style-type: none"> <li>• PG&amp;E service upgrade</li> </ul>	<ul style="list-style-type: none"> <li>• June - July</li> </ul>
PA Building Scene Shop Lighting Upgrade	KTD	<ul style="list-style-type: none"> <li>• Prop 39 funds lighting upgrade to scene shop</li> </ul>	<ul style="list-style-type: none"> <li>• June - July</li> </ul>
Building 8 Retaining Wall	IVC	<ul style="list-style-type: none"> <li>• Repair failed retaining wall</li> </ul>	<ul style="list-style-type: none"> <li>• June - July</li> </ul>
Lighting Installation @ Storage Buildings	IVC	<ul style="list-style-type: none"> <li>• Install lights at storage buildings</li> </ul>	<ul style="list-style-type: none"> <li>• July - August</li> </ul>
Other Minor Capital Repair Projects	IVC & KTD	<ul style="list-style-type: none"> <li>• Projects may include facility modifications for social distancing compliance</li> </ul>	<ul style="list-style-type: none"> <li>• June - August</li> </ul>



# LRC Demolition Update

## Questions & Comments

